

FLOOD INFORMATION
 SUBJECT PROPERTY IS NOT LOCATED WITHIN A SPECIAL FLOOD HAZARD ZONE. IT IS LOCATED IN ZONE "X" AS DEFINED BY FEMA FIRM PANEL NUMBER 45033C0128C, WITH AN PRELIMINARY DATE OF MAY 24, 2011.

GENERAL NOTES

- 1) THE FIELD WORK WAS COMPLETED ON JUNE 11, 2014.
- 2) ELEVATIONS AND GRID COORDINATES ESTABLISHED USING S.C. GPS GEODETIC RTK NETWORK AND BEARINGS BASED ON GPS OBSERVATION.
- 3) ALL DISTANCES ARE HORIZONTAL GROUND DISTANCES.
- 4) ALL AREAS COMPUTED USING COORDINATES FROM MEASURED FIELD DATA.
- 5) BEARINGS BASED ON S.C. GPS GEODETIC RTK NETWORK USING GPS OBSERVATIONS.
- 6) BEARINGS AND DISTANCES SHOWN ON PROPERTY LINES ARE FROM FIELD MEASUREMENT. DEED RECORDED CALLS ARE SHOWN WHERE THEY DIFFER FROM FIELD MEASUREMENTS.

LINE TABLE

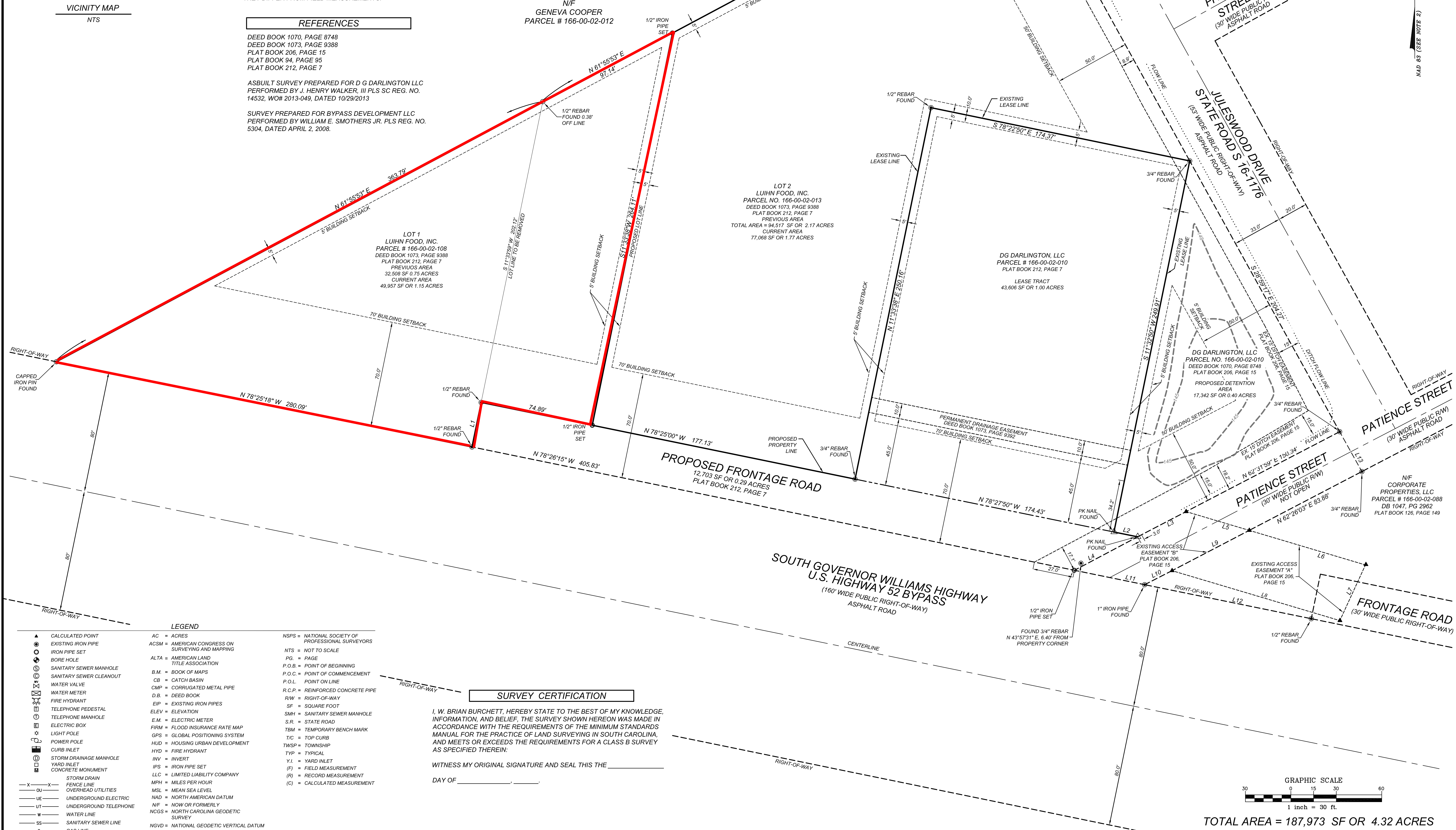
LINE	BEARING	DISTANCE
L1 (F)	S 11°38'45" W	30.00'
L2 (F)	S 78°30'37" E	15.94'
L3 (F)	N 62°31'59" E	36.06'
L4 (F)	N 62°04'35" E	47.19'
L5 (F)	S 73°26'47" E	43.51'
L6 (F)	S 73°26'47" E	80.03'
L7 (F)	S 24°42'16" W	40.41'
L8 (F)	S 73°26'47" E	115.59'
L9 (F)	N 62°27'40" E	57.49'
L10 (F)	N 62°56'24" E	20.32'
L11 (F)	S 78°25'52" E	47.47'
L12 (F)	S 78°28'04" E	112.28'
L13 (F)	S 29°08'55" E	30.10'

REFERENCES

DEED BOOK 1070, PAGE 8748
 DEED BOOK 1073, PAGE 9388
 PLAT BOOK 206, PAGE 15
 PLAT BOOK 94, PAGE 95
 PLAT BOOK 212, PAGE 7

ASBUILT SURVEY PREPARED FOR D G DARLINGTON LLC PERFORMED BY J. HENRY WALKER, III PLS SC REG. NO. 14532, WOH# 2013-049, DATED 10/29/2013

SURVEY PREPARED FOR BYPASS DEVELOPMENT LLC PERFORMED BY WILLIAM E. SMOTHERS JR. PLS REG. NO. 5304, DATED APRIL 2, 2008.



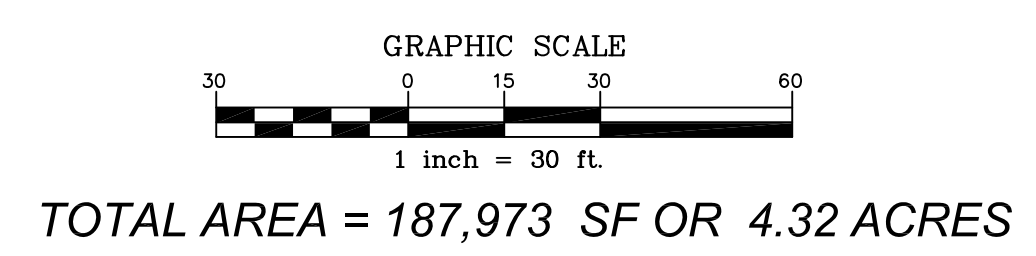
LEGEND

▲ CALCULATED POINT	AC = ACRES	NSPS = NATIONAL SOCIETY OF PROFESSIONAL SURVEYORS
○ EXISTING IRON PIPE	ACSM = AMERICAN CONGRESS ON SURVEYING AND MAPPING	NTS = NOT TO SCALE
○ IRON PIPE SET	ALTA = AMERICAN LAND TITLE ASSOCIATION	PG. = PAGE
○ BORE HOLE	B.M. = BOOK OF MAPS	P.O.B. = POINT OF BEGINNING
○ SANITARY SEWER MANHOLE	CB = CATCH BASIN	P.O.C. = POINT OF COMMENCEMENT
○ SANITARY SEWER CLEANOUT	CMP = CORRUGATED METAL PIPE	P.O.L. = POINT ON LINE
○ WATER VALVE	D.B. = DEED BOOK	R.C.P. = REINFORCED CONCRETE PIPE
○ WATER METER	EP = EXISTING IRON PIPES	R.W. = RIGHT-OF-WAY
○ FIRE HYDRANT	ELEV = ELEVATION	SF = SQUARE FOOT
○ TELEPHONE PEDESTAL	E.M. = ELECTRIC METER	SMH = SANITARY SEWER MANHOLE
○ TELEPHONE MANHOLE	FIRM = FLOOD INSURANCE RATE MAP	S.R. = STATE ROAD
○ ELECTRIC BOX	GPS = GLOBAL POSITIONING SYSTEM	TBM = TEMPORARY BENCH MARK
○ LIGHT POLE	HUD = HOUSING URBAN DEVELOPMENT	TC = TOP CURB
○ POWER POLE	HYD = FIRE HYDRANT	TWSP = TOWNSHIP
○ WATER LINE	INV = INVERT	TYP = TYPICAL
○ SANITARY SEWER LINE	IPS = IRON PIPE SET	Y.I. = YARD INLET
○ GAS LINE	LLC = LIMITED LIABILITY COMPANY	(F) = FIELD MEASUREMENT
	MPH = MILES PER HOUR	(R) = RECORD MEASUREMENT
	MSL = MEAN SEA LEVEL	(C) = CALCULATED MEASUREMENT
	NAD = NORTH AMERICAN DATUM	
	NGCS = NORTH CAROLINA GEODETIC SURVEY	
	NGVD = NATIONAL GEODETIC VERTICAL DATUM	

SURVEY CERTIFICATION

I, W. BRIAN BURCHETT, HEREBY STATE TO THE BEST OF MY KNOWLEDGE, INFORMATION, AND BELIEF, THE SURVEY SHOWN HEREON WAS MADE IN ACCORDANCE WITH THE REQUIREMENTS OF THE MINIMUM STANDARDS MANUAL FOR THE PRACTICE OF LAND SURVEYING IN SOUTH CAROLINA, AND MEETS OR EXCEEDS THE REQUIREMENTS FOR A CLASS B SURVEY AS SPECIFIED THEREIN.

WITNESS MY ORIGINAL SIGNATURE AND SEAL THIS THE _____ DAY OF _____



REVISIONS

NO.	DATE	DESCRIPTION
1	2015-03-03	REVISE PROPOSED LOT LINE, MISC. REVISIONS

OWNER:
 LUHN FOODS, INC.
 2950 GATEWAY CENTRE BLVD.
 MORRISVILLE, NC 27560
 PHONE: (919) 850-0568
 FAX: (919) 850-0727

RE-DIVISION OF PROPERTY DESCRIBED IN DEED BOOK 1073, PAGE 9388 S. C. HIGHWAY 52 BYPASS DARLINGTON COUNTY DARLINGTON, SOUTH CAROLINA

PROJECT NO. LUH-1405
FILENAME: LUH1405-PLAT
DRAWN BY: FWB
SCALE: 1" = 30'
DATE: 06/25/2014
SHEET NO. 1 of 1

COMMERCIAL SITE DESIGN
 802 CREEDMOOR ROAD
 RALEIGH, NORTH CAROLINA 27615
 (919) 846-6021, FAX: (919) 848-3741
 WWW.CSITDESIGN.COM

X:\LUH - Luhn\1405 - Darlington, SC\CADD\SUBDIVISION\PLAT\LUH1405-PLAT.dwg, 3/3/2015 2:20:43 PM